

Inserts buses ventouses

Groupe 1 et 2

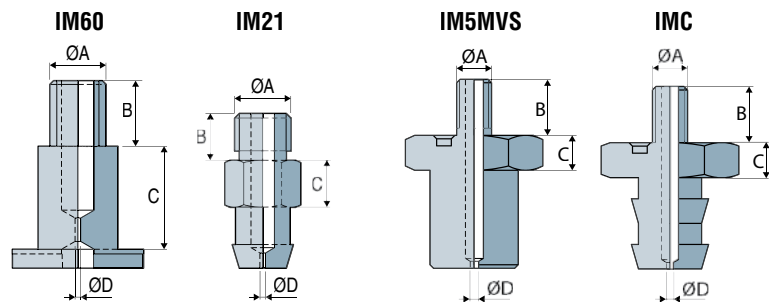


Ces inserts sont dimensionnés pour des installations qui comprennent un grand nombre de ventouses reliées à un seul générateur de vide (technologie caisson), et plus particulièrement dans le cas où la couche de pièces à manipuler comporte des absents. De ce fait l'utilisation d'inserts buses limite la perte de débit et permet donc d'optimiser la taille du générateur de vide.

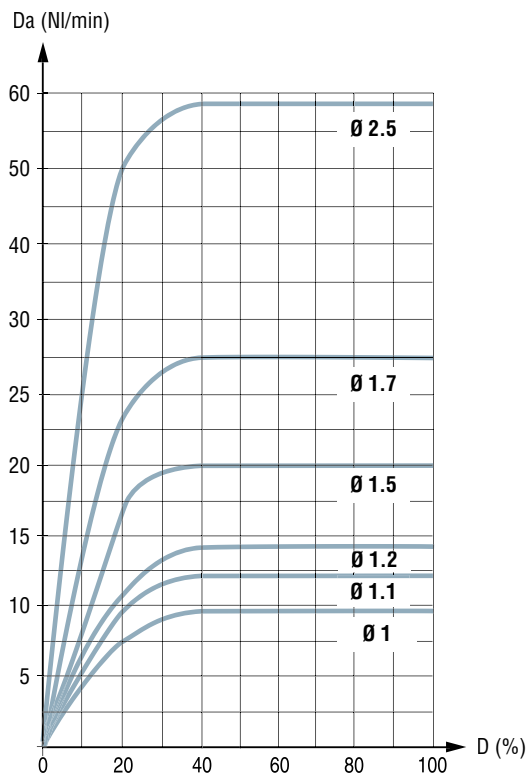
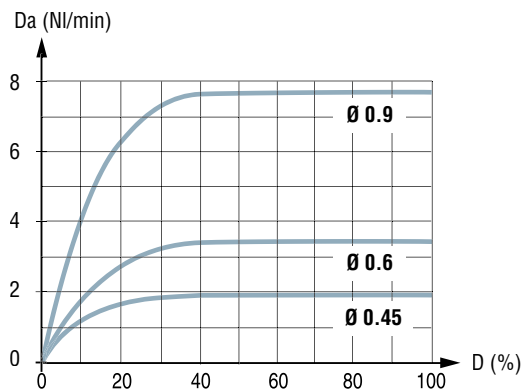
Attention pour les applications dans des ambiances poussiéreuses, ne pas utiliser ce type d'inserts.

Caractéristiques

Références	ØA	ØD	B	C
IM5 MVSD1.1	M5-M	1.1	8	5
IM21 SP058	M5-M	0.45	4.5	5
IM21 SP094	M5-M	0.6	4.5	5
IM60 SP335	M6-M	0.6	7	11
IM60 SP387	M6-M	1.2	7	11
IM60 SP461	M6-M	0.9	7	11
IM60 SP483	M6-M	1	7	11
IM60 SP510	M6-M	1.7	7	11
IM60 SP511	M6-M	2.5	7	11
IMCM5 D0.6	M5-M	0.6	8	5
IMCM5 SP691	M5-M	1.1	8	5
IMCM5 SP701	M5-M	1.5	8	5



Débit aspiré maxi par diamètre de buses



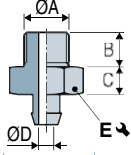
Da = Débit aspiré
D = Dépression

Inserts pour ventouses VP

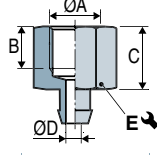
Ventouses plates Ø 8 à 75 mm

Inserts canules

Mâle - IM



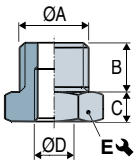
Femelle - IF



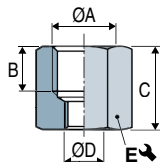
	ØA	B	C	ØD	E ↻	Matière	(g)
IM 11 A	G1/8"-M	7.5	6	3.5	14	Aluminium	4.1
IMC 14	G1/4"-M	10	8	7	17	Aluminium	8.7
IM 21 ⁽²⁾	M5-M	4.5	5	2.5	7	Laiton nickelé	3.1
IM 22 ⁽²⁾	M6-M	5	5	3.5	7	Laiton nickelé	2.7
IM 23	10/32-M	4.5	5	2.5	7	Laiton	3
IM 24	M5-M	4.5	2.5	2.5	10	Laiton nickelé	3.2
IF 10 A	G1/8"-F	8	12	3.5	14	Aluminium	4
IFC 14	G1/4"-F	12	15	6.9	17	Aluminium	8

Adaptateurs pour vis creuses

Mâle - IM

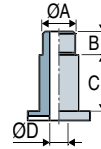


Femelle - IF



	ØA	B	C	ØD	E ↻	Matière	(g)
IM 10 M6F	M10-M	7	3.5	M6-F	13	Laiton	5.9
IM 12 F18	G1/2"-M	14	6	G1/8"-F	22	Laiton nickelé	46.8
IM 14 M6F	G1/4"-M	8	5	M6-F	17	Laiton nickelé	15.9
IM 14 F18	G1/4"-M	8	5	G1/8"-F	17	Laiton nickelé	10.6
IM 18 M6F	G1/8"-M	6	4.5	M6-F	13	Laiton nickelé	6.6
IM 38 F18	G3/8"-M	9	5	G1/8"-F	19	Laiton nickelé	18.8
IF 14 M6F	G1/4"-F	11	16	M6-F	17	Laiton nickelé	20.5
IF 18 M6F	G1/8"-F	7.5	13	M6-F	13	Laiton nickelé	9.9
IF 14 F18	G1/4"-F	9	19	G1/8"-F	17	Laiton nickelé	20.2

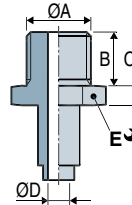
Vis creuses



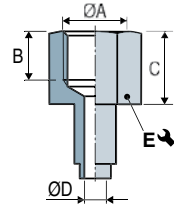
	ØA	B	C	ØD	Matière	(g)
IM 50	M5-M	5	11	2.8	Laiton	7.4
IM 60 ^{(2) (3)}	M6-M	7	11	3.5	Laiton nickelé	7.5
IM 68	M8-M	8	11	5.2	Laiton nickelé	6.4
IM 80	G1/8"-M	8	18	6	Laiton nickelé	23.7
IM 85	M10x150-M	8	18	6	Laiton nickelé	23.5

Inserts sertis usine

Mâle - IM



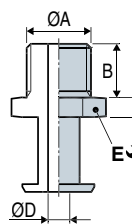
Femelle - IF



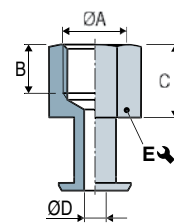
	ØA	B	C	ØD	E ↻	Matière	(g)
IM 51	G1/4"-M	11	6	4.4	17	Aluminium	11.8
IF 50	G1/4"-F	10	15	8	21	Aluminium	15.7
IM 52	G3/8"-M	11	6	8	21	Aluminium	14

Inserts emmanchés

Mâle - IM



Femelle - IF



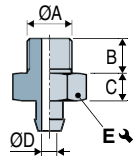
	ØA	B	C	ØD	E ↻	Matière	(g)
IM 41	G1/4"-M	11	4	4.4	17	Aluminium	7.8
IF 40	G1/4"-F	10	15	4.4	17	Aluminium	8.4

Inserts pour ventouses VPG

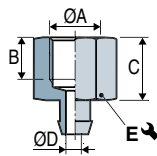
Ventouses extra-plates Ø 2 à 200 mm

Inserts canules

Mâle - IM

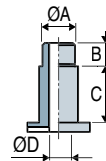


Femelle - IF



	ØA	B	C	ØD	E ↻	Matière	⚖ (g)
IM 3 VPG2	M3-M	3	2	1	5	Aluminium	0.18
IM 5 VPG2	M5-M	4.5	3.5	1	7	Aluminium	0.61
IM 5 VPG5	M5-M	4.5	3.5	2.2	7	Aluminium	0.7
IM 18 VPG5	G1/8"-M	8	5	2.2	14	Aluminium	3.9
IM 18 VPG15	G1/8"-M	8	5	2.2	14	Aluminium	4
IM 18 VPG20	G1/8"-M	8	5	3	14	Aluminium	4.06
IM 18 VPG25	G1/8"-M	8	5	4	14	Aluminium	4.08
IM 18 VPG50	G1/8"-M	8	5	4	14	Aluminium	4.9
IF 5 VPG5	M5-F	6	9	2.2	14	Aluminium	1.2
IF 18 VPG5	G1/8"-F	9	15	2.2	14	Aluminium	5.1
IF 18 VPG15	G1/8"-F	9	15	2.5	14	Aluminium	5.2
IF 18 VPG20	G1/8"-F	9	15	3	14	Aluminium	5.4
IF 18 VPG25	G1/8"-F	9	15	4	14	Aluminium	5.5
IF 18 VPG50	G1/8"-F	9	15	4	14	Aluminium	6.3

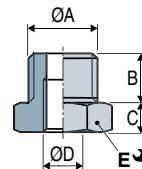
Vis creuses



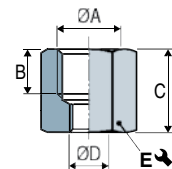
	ØA	B	C	ØD	Matière	⚖ (g)
IM 5 M15	M5-M	5	2	2.5	Laiton nickelé	1.3
IM 5 M20	M5-M	5	4	2.5	Laiton nickelé	2.2
IM 6 M25	M6-M	6	6	3.5	Laiton nickelé	2.7
IM 6 M50	M6-M	6	6	3.5	Laiton nickelé	7.5

Adaptateurs pour vis creuses

Mâle - IM



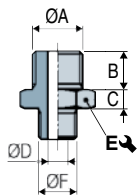
Femelle - IF



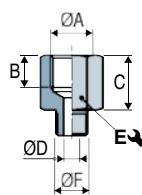
	ØA	B	C	ØD	E ↻	Matière	⚖ (g)
IM 10 M6F	M10-M	7	3.5	M6-F	13	Laiton Nickelé	5.9
IM 14 M6F	G1/4"-M	8	5	M6-F	17	Laiton Nickelé	15.9
IM 18 M5F	G1/8"-M	6	4.5	M5-F	13	Laiton Nickelé	7.3
IM 18 M6F	G1/8"-M	6	4.5	M6-F	13	Laiton Nickelé	6.6
IF 14 M6F	G1/4"-F	11	16	M6-F	17	Laiton Nickelé	20.5
IF 18 M5F	G1/8"-F	7.5	13	M5-F	13	Laiton Nickelé	10.5
IF 18 M6F	G1/8"-F	7.5	13	M6-F	13	Laiton Nickelé	9.9

Inserts vissés

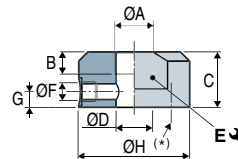
Mâle - IM



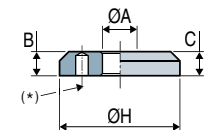
Femelle - IF



Femelle - IF 12120



Femelle - IFS 12120



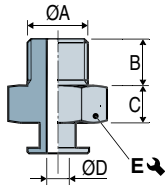
(*) 4 trous ØM8 sur Ø40 (vis fournies)

	ØA	B	C	ØD	E ↻	ØF	G	H	Matière	⚖ (g)
IM 14 M10M	G1/4"-M	10	5	5	17	M10x125-M	-	-	Aluminium	7
IF 14 M10M	G1/4"-F	10	17	5	17	M10x125-M	-	-	Aluminium	8.3
IF 12120	G1/2"-F	24	30	19	48	G1/8"-F	8.7	60	Aluminium	224.8
IFS 12120	G1/2"-F	13	13	-	-	-	-	65	Aluminium	143.5

Inserts pour ventouses VPU

Ventouses plates Ø 6 à 50 mm

Inserts canules

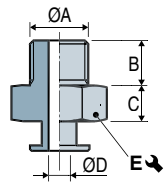


	ØA	B	C	ØD	E ↻	Matière	(g)
IMM5P1	M5-M	4	3.5	1.5	7	Laiton	1.7
IMM5P2	M5-M	4	4.5	2.7	7	Aluminium	0.8
IM18P3	G1/8"-M	7	3.5	4	14	Aluminium	3
IM14P4	G1/4"-M	9	6	5	17	Aluminium	6.3
IM14P5	G1/4"-M	9	6	5	21	Aluminium	10

Inserts pour ventouses VPF

Ventouses plates avec butées Ø 15 à 50 mm

Inserts canules

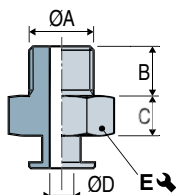


	ØA	B	C	ØD	E ↻	Matière	(g)
IMM5P2	M5-M	4	4.5	2.7	7	Aluminium	0.8
IM18P3	G1/8"-M	7	3.5	4	14	Aluminium	3
IM14P4	G1/4"-M	9	6	5	17	Aluminium	6.3
IM14P5	G1/4"-M	9	6	5	21	Aluminium	10

Inserts pour ventouses VSAB

Ventouses 1.5 soufflets Ø 5 à 50 mm

Inserts canules

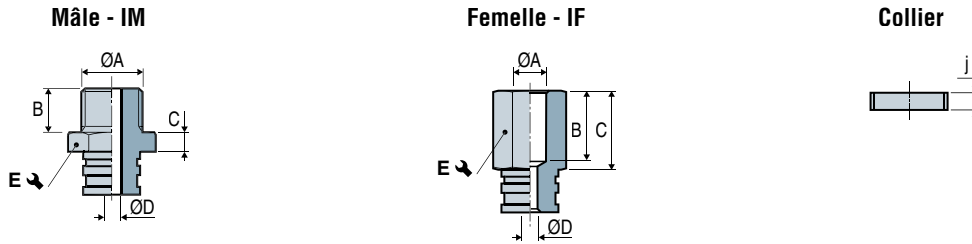


	ØA	B	C	ØD	E ↻	Matière	(g)
IMM5P1	M5-M	4	3.5	1.5	7	Laiton	1.7
IMM5P2	M5-M	4	4.5	2.7	7	Aluminium	0.8
IM18P3	G1/8"-M	7	3.5	4	14	Aluminium	3
IM14P4	G1/4"-M	9	6	5	17	Aluminium	6.3
IM14P5	G1/4"-M	9	6	5	21	Aluminium	10

Inserts pour ventouses VPO

Ventouses plates oblongues

Inserts canules

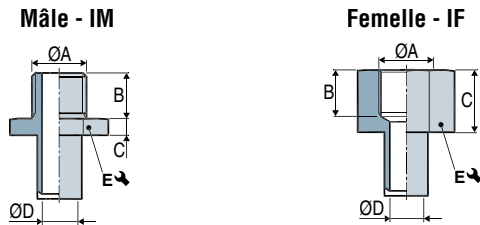


	ØA	B	C	ØD	E ↷	j	Matière	⚖ (g)
IM3VP024	M3-M	3	2	1	5	-	Aluminium	0.2
IM5VP0515	M5-M	5	5	2	8	-	Aluminium	1.3
IM18VP0824	G1/8"-M	8	5	3.5	14	-	Aluminium	3.9
IM14VP01545	G1/4"-M	10	5	3.5	17	-	Aluminium	9.7
IF5VP0515	M5-F	8.5	10	2	8	-	Aluminium	1.3
IF18VP0824	G1/8"-F	9	13	3.5	14	-	Aluminium	4.6
IF14VP01545	G1/4"-F	12	15	3.5	17	-	Aluminium	9.7
VPO COV18	-	-	-	-	-	4	Aluminium	1.6
VPO COV14	-	-	-	-	-	4	Aluminium	2.7

Inserts pour ventouses MVS

Ventouses souples hautes cadences

Inserts canules



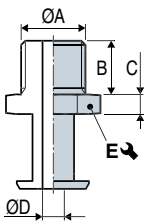
	ØA	B	C	ØD	E ↷	Matière	⚖ (g)
IM 18 SP1251	G1/8"-M	8	5	4.8	14	POM-C	2.5
IM 51 SP143	G1/4"-M	11	6	8	21	Aluminium	10.5
IF 50 SP143	G1/4"-F	10	15	8	21	Aluminium	14.4

Inserts pour ventouses VSA

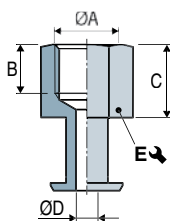
Ventouses 1.5 soufflets Ø 5 à 78 mm

Inserts emmanchés

Mâle - IM



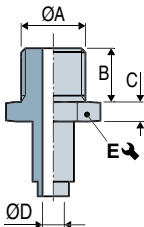
Femelle - IF



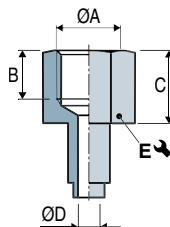
	ØA	B	C	ØD	E	Matière	(g)
IM41	G1/4"-M	11	4	4.4	17	Aluminium	7.8
IF40	G1/4"-F	10	15	4.4	17	Aluminium	8.4

Inserts sertis usine

Mâle - IM

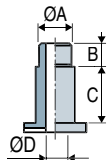


Femelle - IF



	ØA	B	C	ØD	E	Matière	(g)
IM 51	G1/4"-M	11	6	4.4	17	Aluminium	11.8
IF 50	G1/4"-F	10	15	8	21	Aluminium	15.7
IM 52	G3/8"-M	11	6	8	21	Aluminium	14

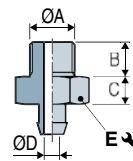
Vis creuses



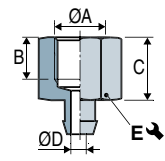
	ØA	B	C	ØD	Matière	(g)
IM 50	M5-M	5	11	2.8	Laiton	7.4
IM 60 ^{(2) (3)}	M6-M	7	11	3.5	Laiton nickelé	7.5
IM 68	M8-M	8	11	5.2	Laiton nickelé	6.4
IM 80	G1/8"-M	8	18	6	Laiton nickelé	23.7
IM 85	M10x150-M	8	18	6	Laiton nickelé	23.5

Inserts canules

Mâle - IM



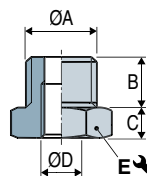
Femelle - IF



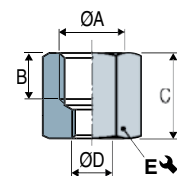
	ØA	B	C	ØD	E	Matière	(g)
IM 11 A	G1/8"-M	7.5	6	3.5	14	Aluminium	4.1
IMC 14	G1/4"-M	10	8	7	17	Aluminium	8.7
IM20	M3-M	3	2	1.4	5	Aluminium	0.4
IM 21 ⁽²⁾	M5-M	4.5	5	2.5	7	Laiton nickelé	3.1
IM 22 ⁽²⁾	M6-M	5	5	3.5	7	Laiton nickelé	2.7
IM 23	10/32-M	4.5	5	2.5	7	Laiton	3
IM 24	M5-M	4.5	2.5	2.5	10	Laiton nickelé	3.2
IF 10 A	G1/8"-F	8	12	3.5	14	Aluminium	4
IFC 14	G1/4"-F	12	15	6.9	17	Aluminium	8

Adaptateurs pour vis creuses

Mâle - IM



Femelle - IF



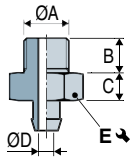
	ØA	B	C	ØD	E	Matière	(g)
IM 10 M6F	M10-M	7	3.5	M6-F	13	Laiton	5.9
IM 12 F18	G1/2"-M	14	6	M6-F	22	Laiton nickelé	46.5
IM 14 M6F	G1/4"-M	8	5	M6-F	17	Laiton nickelé	15.9
IM 14 F18	G1/4"-M	8	5	G1/8"-F	17	Laiton nickelé	10.6
IM 18 M6F	G1/8"-M	6	4.5	M6-F	13	Laiton nickelé	6.6
IM 38 F18	G3/8"-M	9	5	G1/8"-F	19	Laiton nickelé	18.8
IF 14 M6F	G1/4"-F	11	16	M6-F	17	Laiton nickelé	20.5
IF 18 M6F	G1/8"-F	7.5	13	M6-F	13	Laiton nickelé	9.9
IF 14 F18	G1/4"-F	9	19	G1/8"-F	17	Laiton nickelé	20.2

Inserts pour ventouses VSAG

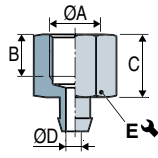
Ventouses 1.5 soufflets Ø 10 à 150 mm

Inserts canules

Mâle - IM

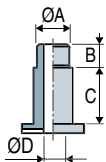


Femelle - IF



	ØA	B	C	ØD	E ↘	Matière	⚖ (g)
IM 5 VPG5	M5-M	4.5	3.5	2.2	7	Aluminium	0.7
IM 18 VPG5	G1/8"-M	8	5	2.2	14	Aluminium	3.9
IM 18 VPG25	G1/8"-M	8	5	4	14	Aluminium	4.1
IM 18 VPG50	G1/8"-M	8	5	4	14	Aluminium	4.9
IF 5 VPG5	M5-F	6	9	2.2	14	Aluminium	1.2
IF 18 VPG5	G1/8"-F	9	15	2.2	14	Aluminium	5.1
IF 18 VPG25	G1/8"-F	9	15	4	14	Aluminium	5.5
IF 18 VPG50	G1/8"-F	9	15	4	14	Aluminium	6.3

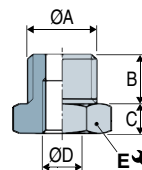
Vis creuses



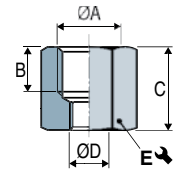
	ØA	B	C	ØD	Matière	⚖ (g)
IM 6 M25	M6-M	6	6	3.5	Laiton nickelé	2.7
IM 6 M50	M6-M	6	6	3.5	Laiton nickelé	7.5

Adaptateurs pour vis creuses

Mâle - IM



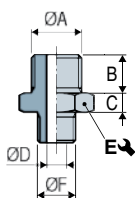
Femelle - IF



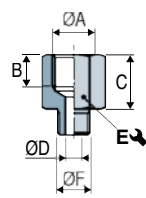
	ØA	B	C	ØD	E ↘	Matière	⚖ (g)
IM 10 M6F	M10-M	7	3.5	M6	13	Laiton Nickelé	5.9
IM 14 M6F	G1/4"-M	8	5	M6-F	17	Laiton Nickelé	15.9
IM 18 M6F	G1/8"-M	6	4.5	M6-F	13	Laiton Nickelé	6.6
IF 14 M6F	G1/4"-F	11	16	M6-F	17	Laiton Nickelé	20.5
IF 18 M6F	G1/8"-F	7.5	13	M6-F	13	Laiton Nickelé	9.9

Inserts vissés

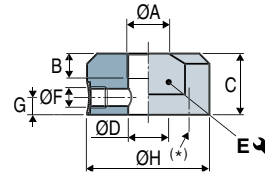
Mâle - IM



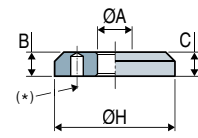
Femelle - IF



Femelle - IF 12120



Femelle - IFS 12120



(*) 4 trous Ø M8 sur Ø 40 (vis fournies)

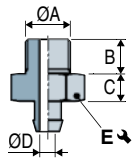
	ØA	B	C	ØD	E ↘	ØF	G	H	Matière	⚖ (g)
IM 14 M10M	G1/4"-M	10	5	5	17	M10x125-M	-	-	Aluminium	7
IF 14 M10M	G1/4"-F	10	17	5	17	M10x125-M	-	-	Aluminium	8.3
IF 12120	G1/2"-F	24	30	19	48	G1/8"-F	8.7	60	Aluminium	224.8
IFS 12120	G1/2"-F	13	13	-	-	-	-	65	Aluminium	143.5

Inserts pour ventouses **VSAJ**

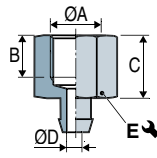
Ventouses 1.5 soufflets Ø 15 à 30 mm

Inserts canules

Mâle - IM

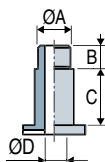


Femelle - IF



	ØA	B	C	ØD	E ↻	Matière	(g)
IM 18 VPG15	G1/8"-M	8	5	2.2	14	Aluminium	4
IM 18 VPG20	G1/8"-M	8	5	3	14	Aluminium	4.1
IM 18 VPG25	G1/8"-M	8	5	4	14	Aluminium	4.1
IF 18 VPG15	G1/8"-F	9	15	2.5	14	Aluminium	5.2
IF 18 VPG20	G1/8"-F	9	15	3	14	Aluminium	5.4
IF 18 VPG25	G1/8"-F	9	15	4	14	Aluminium	5.5

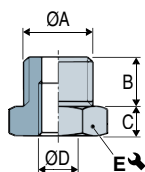
Vis creuses



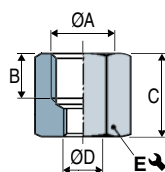
	ØA	B	C	ØD	Matière	(g)
IM 5 M15	M5-M	5	2	2.5	Laiton nickelé	1.3
IM 5 M20	M5-M	5	4	2.5	Laiton nickelé	2.2
IM 6 M25	M6-M	6	6	3.5	Laiton nickelé	2.7

Adaptateurs pour vis creuses

Mâle - IM



Femelle - IF



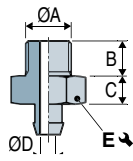
	ØA	B	C	ØD	E ↻	Matière	(g)
IM 10 M6F	M10-M	7	3.5	M6-F	13	Laiton Nickelé	5.9
IM 14 M6F	G1/4"-M	8	5	M6-F	17	Laiton Nickelé	15.9
IM 18 M5F	G1/8"-M	6	4.5	M5-F	13	Laiton Nickelé	7.3
IM 18 M6F	G1/8"-M	6	4.5	M6-F	13	Laiton Nickelé	6.6
IF 14 M6F	G1/4"-F	11	16	M6-F	17	Laiton Nickelé	20.5
IF 18 M5F	G1/8"-F	7.5	13	M5-F	13	Laiton Nickelé	10.5
IF 18 M6F	G1/8"-F	7.5	13	M6-F	13	Laiton Nickelé	9.9

Inserts pour ventouses **VSD, VSE, VSP**

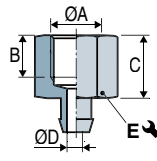
Ventouses pâtisserie

Inserts canules

Mâle - IM



Femelle - IF



	ØA	B	C	ØD	E ↻	Matière	⚖ (g)
IM 11 ASP 139	G1/8"-M	7.5	6	3.5	14	Aluminium	4.3
IM 21 SP 139	M5-M	4.5	5	2.5	7	Aluminium	2.8
IF 10 ASP 139	G1/8"-F	8	12	3.5	14	Laiton nickelé	4.3

Inserts pour ventouses **VPA**

Ventouses papier

Inserts canules

Modèle	ØA	B	C	ØD	E ↻	Matière	⚖ (g)
IM 11 A	G1/8"-M	7.5	6	3.5	14	Aluminium	4.1
IM 11 A SP082	G1/8"-M	7.5	6	3.5	14	Aluminium	4.1
IM 21 ⁽¹⁾	M5-M	4.5	5	2.5	7	Laiton nickelé	3.1
IM 22 ⁽¹⁾	M6-M	5	5	3.5	7	Laiton nickelé	2.7
IM 41 SP477	G1/4"-M	11	4	44	17	Aluminium	7.5
IM 51 SP143	G1/4"-M	11	6	8	21	Aluminium	10.5
IM 5 VPA30	M5-M	5	3	2.5	13	Aluminium	5.7
IF 10 A	G1/8"-F	8	12	3.5	14	Aluminium	4
IF 10 A SP082	G1/8"-F	8	12	3.5	14	Aluminium	4
IF 50 SP143	G1/4"-F	10	15	8	21	Aluminium	14.4
IF 40 SP477	G1/4"-F	10	15	4.4	17	Aluminium	8